



Western Bay
ADOPTION SERVICE
GWASANAETH MABWYSIADU
Bae'r Gorllewin

Western Bay Adoption Service



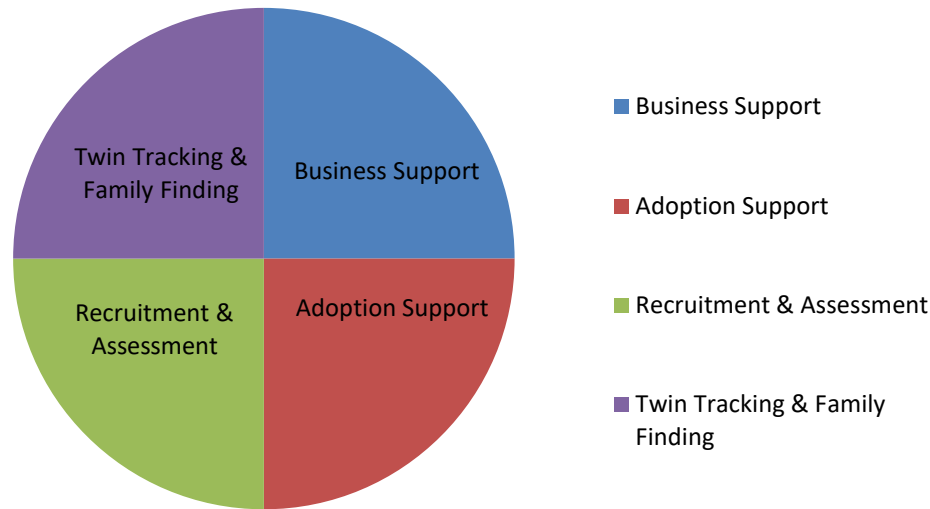
Current Position for WBAS



- Co-located February 2015 and operational as a Regional Service from April 2015
- Currently Based at Port Talbot Civic Centre
- Currently there is an independent review taking place as to whether Bridgend will remain part of the regional collaboration.

Functional Model

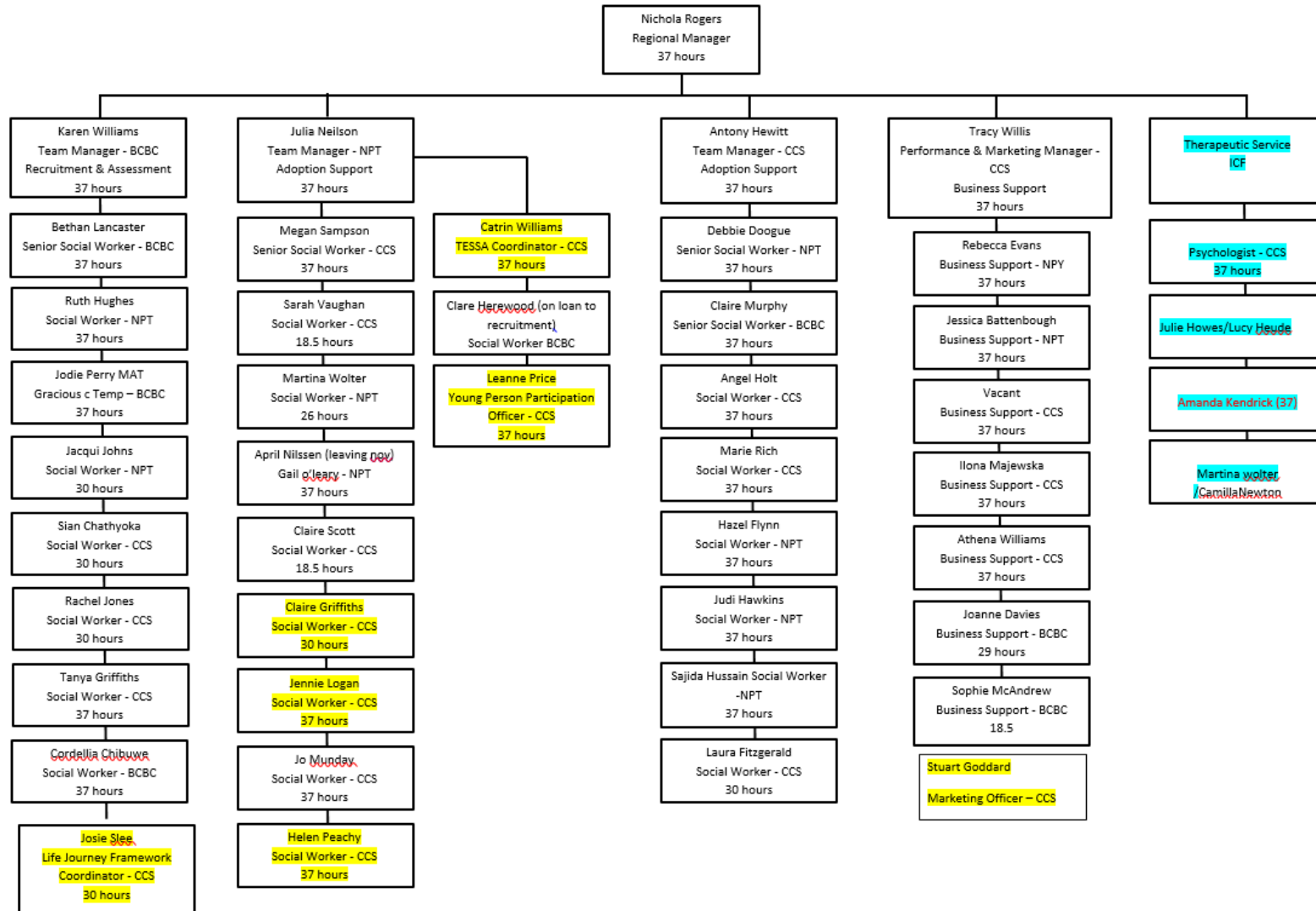
There are four functions within the Service



Functional Model- Structure



Western Bay Adoption Service - Structure 2019



Recruitment and Assessment



- New Marketing officer. Work to improve website and social media
- Average number of enquiries per year = 134
- Assessments ongoing as at 31.10.19 = 28
- Number of approved adopters
 - 01.04.18 – 31.3.19 = 42
 - 01.04.19 – 31.10.19 = 32
 - End of year prediction = 55-60

Twin tracking and Family Finding



- No. Children referred to the service
01.04.18 – 31.3.19 = 170
01.04.19 – 30.11.19=
- No. Placement Orders made
01.04.18 - 31.3.19= 94
01.04.19 – 31.10.19 = 37
- No. Children Placed
01.04.18 - 31.3.19 = 67
01.04.19 - 31.10.10 = 52
End of year prediction = 80

Family Finding Activity



Currently there are 70 children in Family finding activity

16 of these have potential links identified

17 of these are in the matching process

12 of these have a change of plan

25 of these have active family finding activity

Adoption Support



- No. of Open Cases receiving support - 300
- No. of Letterbox cases active/open 948
- No. of contact investigations 36
- No of birth records counselling 34